



LE GRILLEN

Salle de Musiques Actuelles et Amplifiées de la Ville de COLMAR
!!!CONCERTS DEPUIS 1998!!!

19 rue des jardins – 68000 COLMAR

Tel : +33 03 89 216 180

Fax : +33 03 89 216 181

www.grillen.fr – technique@grillen.fr

IMPORTANT NOTES:

- Only M1 material type or B-s2, d0 are allowed in the establishment.
- Any request for equipment in addition to this data sheet is the responsibility of the organizer or producer.

TECHNICAL SPECIFICATIONS

TECHNICAL CONTACTS

HOUSE MANAGER

David / Julien Judd

technique@grillen.fr

+33 (0) 389 216 180

SOUND

Rémy

wviii@free.fr

+33 (0) 7 80 04 17 84

LIGHTS

Philou

08layla@gmail.com

+33 (0) 6.10.01.42.49

MAIN VENUE - Red Room



CAPACITY

350 PEOPLE STANDING

150 PEOPLE SITTING

STAGE DIMENSION

OPENING : 7,10 M

DEPTH : 5,10 M

HEIGHT : 0,70 M

CLEARANCE : 4,10 M

SOUND

P. A.

6 ARCS L-ACOUSTICS

2 SUB L-ACOUSTICS SB 28 + AMP LA8

DESK SOUNDCRAFT VI 3000

CD PLAYER TEAC

USB RECORDER TASCAM

MONITORS

MONITORS FROM F.O.H.

8 MONITOR LINES

8 NEXO PS15

2 NEXO PS15 R2

LIMITER : 102 DB

MICROPHONES

- 2 BETA 52 SHURE
- 1 D6 AUDIX
- 2 SM 91 SHURE
- 2 KM 184 NEUMANN
- 3 SM 81 SHURE
- 4 E 604 SENHEISER
- 4 E 904 SENHEISER
- 4 BETA 98 SHURE
- 7 SM 58 SHURE
- 3 BF 521 SENHEISER
- 8 SM 57 SHURE
- 2 E 609 SENHEISER
- 2 E 906 SENHEISER
- 2 BETA 58 A SHURE
- 1 BETA 87 SHURE
- 2 BETA 57 A SHURE
- 4 DI BOX BSS AR 115
- 2 DI BOX RADIAL JDI (Passive)
- 2 DI BOX RADIAL STEREO PRO AV2
- 4 DI BOX RADIAL PRO DI
- 2 DPA 2011
- 2 M201 SENHEISER
- 1 RE20 BEYERDYNAMIC
- 1 M88 BEYERDYNAMIC
- 2 C414 XL II AKG

DJ EQUIPMENT

- 2 TECHNICS 1200 MKII
- 2 PIONEER CDJ 800
- 1 PIONEER DJM 850

MICROPHONE STANDS

- 10 SMALL STANDS
- 10 LARGE STANDS
- 3 STRAIGHT BOOM

LIGHTS

ELECTRIC POWER

- Three phase 63 A 380V : Lights
- Three phase 63 A 380V : Moving lights and leds

SETUP

DIMMERS

- 3 ADB 12/2kw dimmers (36 channels)

LIGHT DESKS

- MA Lighting GRAND MA II Full Size
- + MA Lighting Light Commander 48/96
- MA Lighting Scan Commander

LIGHTS

TECHNICAL GRILL

- 20 1000W - 220V - PAR64 CP61
- 9 ETC Source Four Junior 575W Profiles
- 3 ADB C101 1000W PC
- 3 Blinders T8 (6 bars of 8 85W lamps)
- 4 MARTIN ATOMIC 3000 strobes + 4 MARTIN colors scrollers

FLOOR LIGHTS

- 6 - 1000W - 220V PAR 64 - CP62
- 1 Blinders SET T8 (2 bars of 8 85W lamps)
- 2 MARTIN ATOMIC 3000 strobes

IN HALL

FRONT POLE (1.2m from stage)

- 6 PC ADB C101 - 1000W PC
- 2 ADB DW 105 - 1000W profiles

MEDIAN POLE (5.50M from stage)

- 3 ADB C 101 - 1000W PC

OTHERS

- 1 UNIQUE hazer
- 4 MANFROTTO stands - H 2.80m
- 1 mirror ball (in hall)

VIDEO

- 1 SCREEN IN STAGE BACKGROUND 4M X 3M + VIDEO PROJECTOR EPSON EH-TW5900

MOVING LIGHTS AND LEDS












TECHNICAL GRILL

- 5 MARTIN Rush MH1 Profile Plus
- 5 MARTIN MAC AURA WASH
- 12 MARTIN Rush PAR 2 RGBW ZOOM
- 4 ROBIN LED BEAM 150 ROBE
- 3 AYRTON ALCALINE2 3G Bars

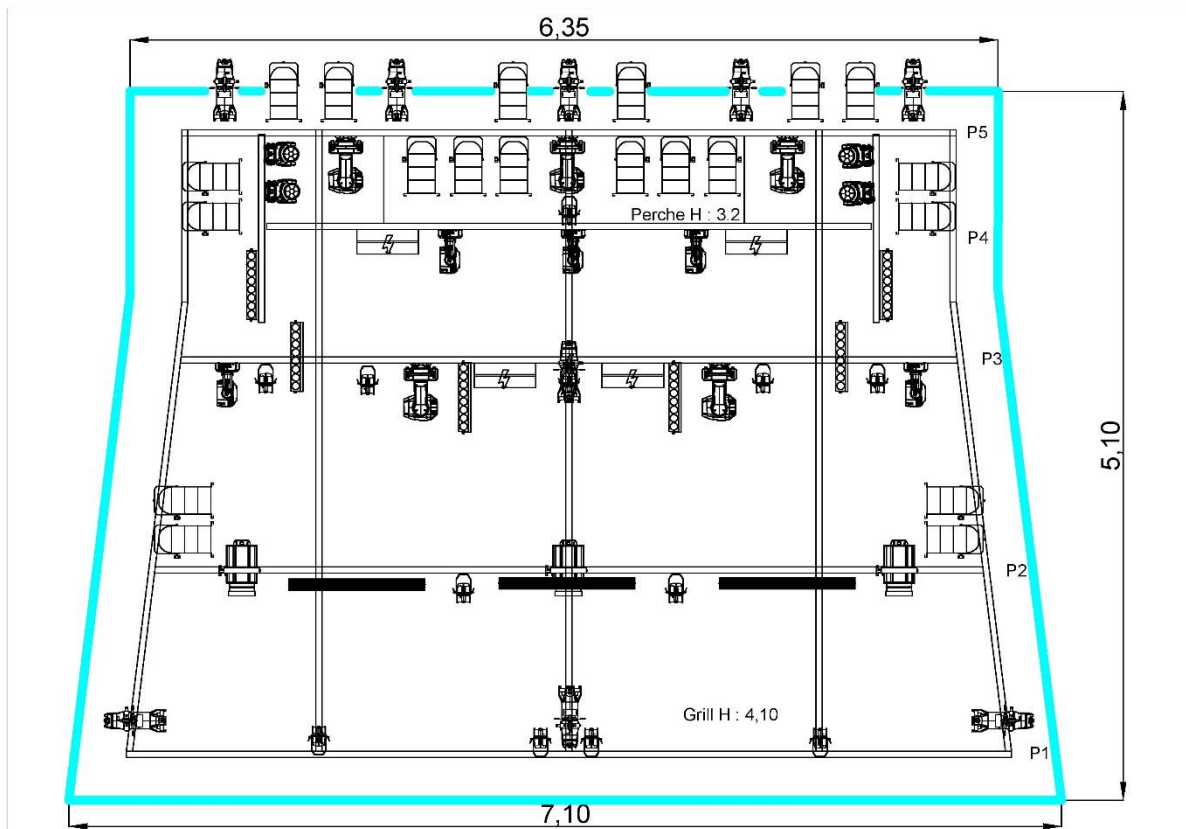
FLOORS ML

- 4 MARTIN Rush MH1 PROFILE PLUS
- 2 MARTIN MAC AURA WASH
- 4 ROBIN LED BEAM 150 ROBE

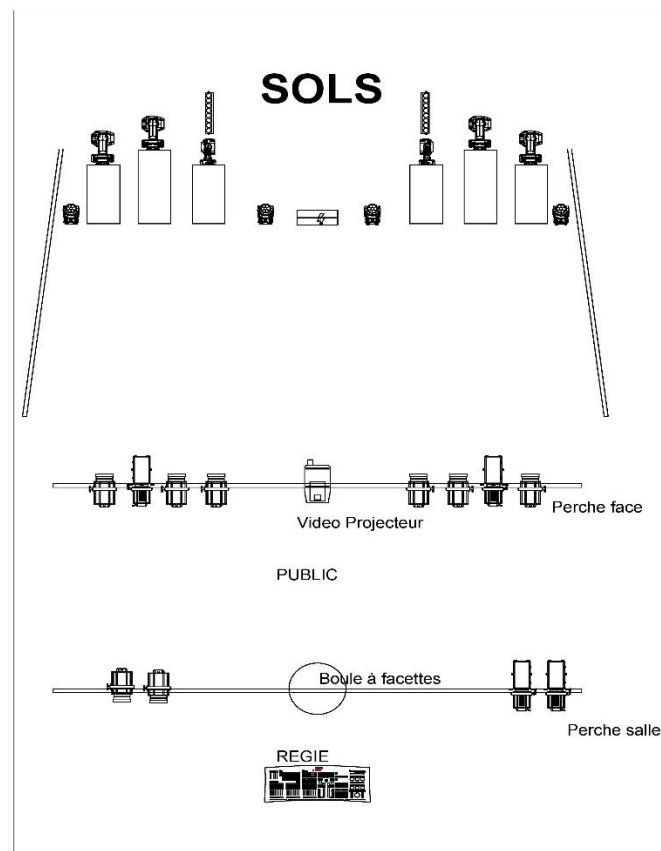
CAPTION

	PAR 64 NSP (20)		Robin Led Beam 150 (8)
	Déc. ETC Junior (9)		
	Déc. 614SX (4)		
	Martin Rush MH1 (9)		Série de T8 (4)
	Martin MACAURA (7)		PC 1Kw (11)
	Martin Rush Par 2 RGBWZ (12)		
	Ayrton Arcaline 2 3G (3)		Martin Atomic + CC (5)

TECHNICAL GRILL



FLOORS



GRILLEN PATCH LIGHTS

FIXTURES – LINE 1 :

1 18 35 52 69 : MARTIN RUSH MH 1 PROFILE PLUS 17 CHANNELS REAR TRUSS
86 103 120 137 : MARTIN RUSH MH 1 PROFILE PLUS 17 CHANNELS FLOOR
201 226 251 276 301 : MARTIN MAC AURA LED WASH EXTENDED 25 CHANNELS REAR TRUSS
326 351 : MARTIN MAC AURA LED WASH EXTENDED 25 CHANNELS FLOOR
381 391 401 411 : MARTIN RUSH PAR 2 RGBW ZOOM 9 CHANNELS FRONT TRUSS
421 431 441 451 461 471 481 491 : MARTIN RUSH PAR 2 RGBW ZOOM 9 CHANNELS REAR TRUSS
175 182 189 : AYRTON ARCALINE 2 3G FULL COLOR MODE 3

DIMMERS – LINE 2 :

1 THRU 7 : PROFILES – ETC SOURCE FOUR JUNIOR X 8 REAR TRUSS
8 9 10 : PAR 64 1000W CP 61 COLOR 1 X 6 REAR TRUSS
11 12 13 14 : PAR 64 1000W CP 61 COLOR 2 X 8 REAR TRUSS
15 16 17 : PAR 64 1000W CP 61 WHITE X 6 REAR TRUSS
18 19 20 : PAR 64 1000W CP 62 WHITE X 6 FLOOR
21 22 23 24 : BLINDERS BARRS X 8 REAR TRUSS AND FLOOR
25 26 27 : PC 1000W ADB 101 WHITE X 5 FRONT TRUSS
28 29 : PC 1000W ADB 101 COLOR 1 X 4 FRONT TRUSS
30 31 : PC 1000W ADB 101 WHITE X 3 MIDDLE TRUSS
32 : ACL 250W X 8
34 : PC 1000W X 2 MERCHANDISING

EXTRAS – LINE 2 :

33 : MIRROR BALL
37 40 43 46 49 : MARTIN ATOMIC 3000 MODE 3 X 5
101 102 103 104 : MARTIN ATOMIC COLORS SCROLLERS
501 502 : UNIQUE HAZER + FAN

SMALL VENUE - Pink Room



© Julien "Judd"

SOUND

CAPACITY

180 PEOPLE STANDING

100 PEOPLE SITTING

STAGE DIMENSION

OPENING : 5 M

DEPTH : 4.5 M

HEIGHT : 0.60M

CLEARANCE : 4,40 M

P. A.

2 L-ACOUSTICS 12 XT

2 SUB L-ACOUSTICS SB 18

DESK : MIDAS PRO 1

CD PLAYER TEAC

MONITORS

MONITORS FROM F.O.H.

4 MONITOR LINES

6 NEXO PS 10

LIMITER : 102 DB

LIGHTS

ELECTRIC POWER

- Three phase 40A - 380V - moving lights
- + Three phase 32A - 380V -lights

SETUP

DIMMERS

- 1 ADB 12/12KW Dimmer (12 channels)

LIGHT DESKS

- JB Lighting LICON 1X
- + MA LIGHTING GRAND MA II FULLSIZE

OTHERS

- 1 UNIQUE hazer

VIDEO

- VIDEO PROJECTOR EPSON EH-TW5900

LIGHTS

STAGE POLES

- 12 1000W - 220V - PAR 64 CP61
- 4 ETC SOURCE FOUR JUNIOR 575W
- 1 Série ACL 8 x 250 W

FRONT POLE (1m from stage)

- 4 R. JULIAT LUTINS PC 1000W

FLOOR LIGHTS

- 4 - 1000W - 220V PAR 64 CP62

MOVING LIGHTS

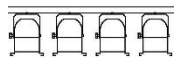
STAGE POLES

- 3 MARTIN MAC AURA WASH
- 4 MARTIN Rush MH1 PROFILE
- 4 JB LIGHTING SPARX 7 – WASH

FLOORS ML

- 2 MARTIN MAC AURA WASH

CAPTION



Série d'ACL



Martin Mac Aura



Sparx 7



Martin Rush MH1



Découpe ETC



Par 64



PC 1Kw

TECHNICAL GRILL

